

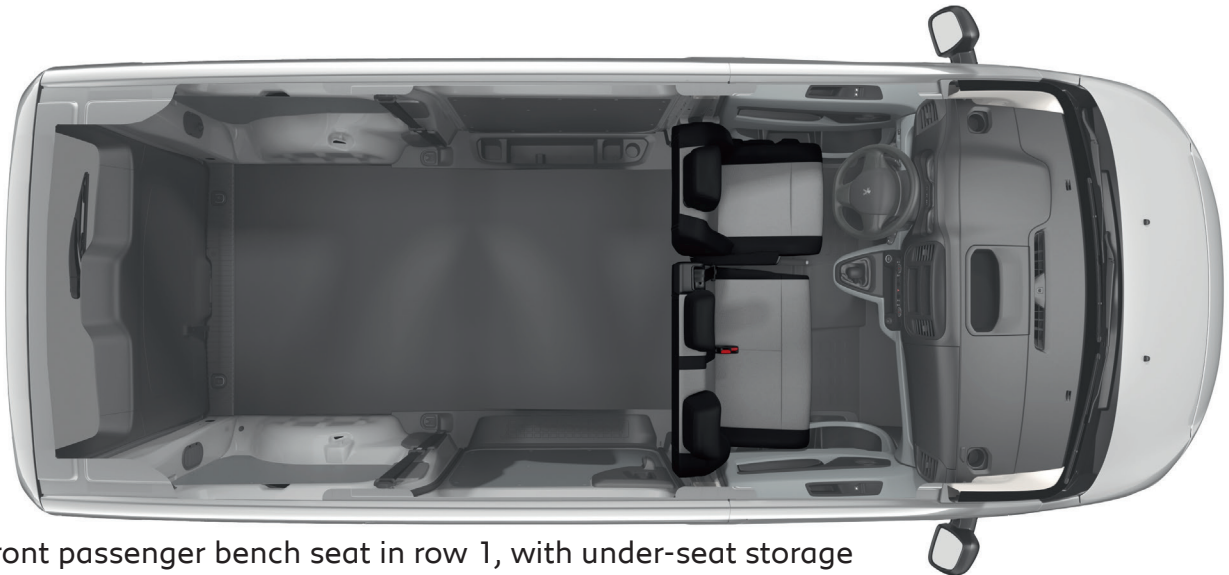


PEUGEOT EXPERT COMBI
PRICES, EQUIPMENT & TECHNICAL SPECIFICATIONS
JANUARY 2022: E & OE

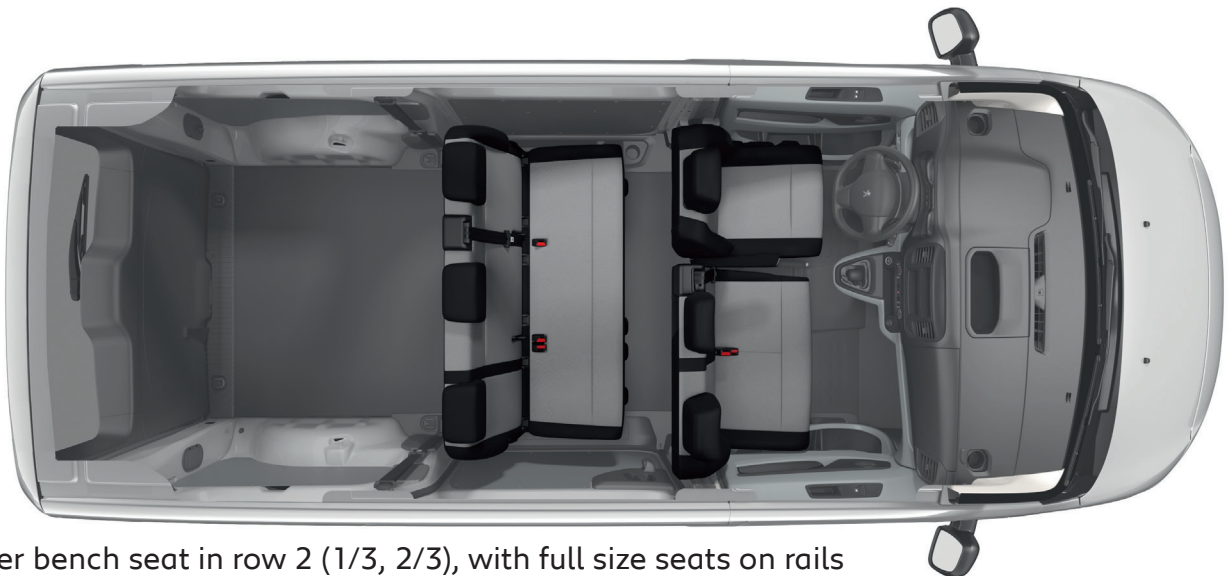


INTRODUCING THE NEW PEUGEOT EXPERT COMBI

The new Peugeot Expert Combi is available in two lengths* - Standard or Long. It can carry up to 9 passengers, thanks to its flexible seating arrangement, even in its shortest Compact form. Ideal for families, groups or sports clubs who are looking for a maximum number of seats and space, the new Peugeot Expert Combi offers you a practical solution for whatever life throws your way.



Dual front passenger bench seat in row 1, with under-seat storage



3-seater bench seat in row 2 (1/3, 2/3), with full size seats on rails



3-seater bench seat in row 3 with full size seats on rails

NEW EXPERT COMBI

Exterior Style

- Black bumpers, door mirrors, door handles and side rubbing strips
- Headlights with integrated Daytime Running Lights (DRLs)
- 16" steel wheels with black centre cap

Safety & Security

- ABS with Electronic Brake Force Distribution (EBFD)
- Driver Attention Alert (Electric Version)
- Electric Parking Break (Electric Version)
- Electronic Stability Control (ESC)
- Hill Start Assist function
- Driver and front passenger airbags (passenger airbag with deactivation switch)
- Front lateral airbags
- Nine 3-point inertia reel seat belts
- Tyre Pressure Sensors
- Remote central locking with deadlocks
- Cruise control with speed limiter
- Full size spare wheel
- Protective plate under engine (Electric Version)
- Unfastened seatbelt visual warning system on driver and front passenger seats (with dual bench or single passenger seat)
- VisioPark with 180 degree camera with display on touchscreen and rear parking sensors

Comfort & Convenience

- Height and reach adjustable steering wheel
- Power assisted steering
- Front electric windows one touch operation
- 2 cup holders, one on driver side and one on passenger side on the top of the dashboard
- Directional heating and air recycling via 4 dashboard air vents
- Air conditioning
- Glovebox (Illuminated)
- Storage area on the top of the dashboard
- Driver and passenger sunvisor with ticket holder
- Courtesy light to cabin
- Rubber flooring in cabin
- Mode 3 charging cable (Electric Version)

Technology & Entertainment

- Matrix 3.5" touchscreen with DAB radio, Bluetooth, USB socket and audio jack
- 12 volt sockets (cabin X2)

Seating

- Driver's seat rake and reach adjustable
- Front seat height-adjustable head restraints
- Height adjustable driver's seat with lumbar adjustment and armrest
- Dual front passenger bench seat with under-seat storage
- 3-seater bench (1/3, 2/3) on row 2 with full size rear seats on rails
- 3-seater bench on row 3 with full size rear seats on rails
- 3 Isofix points on row 2

Lighting and Visibility

- Electrically adjustable and heated door mirrors
- High level third brake light

Doors and Windows

- Twin sliding doors (not electric)
- Laminated windscreen
- Fixed side windows with noise-reducing tinted glass (to approx. 30% opacity)
- Tailgate with heated window and wash-wipe

PEUGEOT EXPERT COMBI: EU6.3 PRICE LIST

Length	Model Description	RRSP*	WLTP CO2	VRT Band	Annual Road Tax	Engine CC	Fuel Type	Transmission
Standard	1.5 BlueHDi 120bhp 9-Seats	€45,750	168	D	€420	1499	Diesel	6-speed
	eCombi 50 kWh Auto	€40,895**	0	A	€120	0	Electric	1-Speed
Long	1.5 BlueHDi 120bhp 9-Seats	€47,355	170	D	€420	1499	Diesel	6-speed

*Dealer delivery related charges & metallic paint not included.

** Includes SEAI grant and VRT Relief



PEUGEOT EXPERT COMBI: OPTIONS PRICE LIST

	CODE	COMBI	RRSP
PAINT			
Metallic	..M0	○	€750
Bianca White	..0N	●	€0
Special Paint	E0	○	€1095
SAFETY AND SECURITY			
Alarm (Electric Versions)	AB08	○	€390
Look pack - colour coded bumpers, mirrors and door handles (half painted rear bumper on long)	PD22/PD69	○	€820
Rear parking sensors	UB01	○	€410
INTERIOR FEATURES			
Electric folding and heated mirrors	HU02	○	€235
Automatic dualzone airconditioning	RE07	○	€295
EXTERIOR FEATURES			
Foglights	PR06	○	€195
Privacy glass rows 2 and 3	VD09	○	€140
Sliding side windows	VG02	○	€440
50/50 swing glazed doors with heating system and wipers for each door. Opening 180 degrees.	WO05	○	€195
IN CAR ENTERTAINMENT			
7" Touchscreen (incl Bluetooth, USB, 12V socket, Mirrorscreen: Android Auto)	WL3L	○	€470

Due to production challenges at present, please note that options are unavailable for Expert Combi models until further notice. Your local dealer can advise further on when options will be made available to order.

PEUGEOT EXPERT COMBI: RANGE EQUIPMENT

	COMBI
COMFORT & CONVENIENCE	
Height and reach adjustable steering wheel	●
Power assisted steering	●
Front electric windows with 'one-touch' operation	●
Directional heating and air recycling via 4 dashboard air vents	●
Air conditioning	●
2 cup holders, one on driver side and one on passenger side on the top of the dashboard	●
Mode 3 charging cable (Electric version)	●
SAFETY & SECURITY	
ABS with Electronic Brake Force Distribution (EBFD)	●
Electronic Stability Control (ESC)	●
Hill Start Assist function	●
Tyre pressure sensors	●
Driver and front passenger airbags. Passenger airbag deactivation switch	●
Front lateral airbags	●
Nine 3-point inertia reel seat belts	●
Unfastened seatbelt visual warning system on driver and front passenger seats (with dual bench or optional single passenger seat)	●
Remote central locking with deadlocks	●
Cruise control with programmable speed limiter	●
Central locking push button on dash	●
Automatic door locking (activated by vehicle travelling over 6kph)	●
Rolling code transponder immobiliser	●
Visible VIN at base of windscreen	●
Locking fuel filler cap	●
Automatic fuel cut-off & door unlocking in event of accident	●
Height-adjustable 3-point pre-tensioner seat belts with force limiter (central seatbelt on dual passenger seat not height-adjustable & no pre-tensioner)	●
Height-adjustable front head restraints	●
Driver Attention Alert (Electric Version)	●
Electric Parking Break (Electric Version)	●
Protective plate under engine (Electric Version)	●
VisioPark with 180 degree camera with display on touchscreen and rear parking sensors	●
TECHNOLOGY & ENTERTAINMENT	
Matrix 3.5" touchscreen with DAB radio, Bluetooth, USB socket and audio jack	●
12 volt sockets (cabin x 2)	●
INSTRUMENTS	
Speedometer with digital odometer, digital trip recorder & rev counter	●
Water temperature and fuel gauges, oil level indicator	●
Distance to next service indicator	●
LCD central display & trip computer	●
Clock	●
Lights on warning	●
Side, headlamp and indicator warning	●
Battery charge warning	●
Door open warning	●

PEUGEOT EXPERT COMBI: RANGE EQUIPMENT

	COMBI
EXTERIOR STYLE	
Black front and rear bumpers	•
Black side rubbing strips	•
Black exterior door handles	•
Black door mirrors	•
WHEELS & TYRES	
Full size steel spare wheel	•
16 inch steel wheels with black centre cap (215/65 R16 C)	•
17 inch steel wheels with black centre cap (225/55 R17 C)	•
DOORS & WINDOWS	
Twin sliding doors (not electric)	•
Laminated windscreen	•
Fixed side windows with noise-reducing tinted glass (to approx. 30% opacity)	•
Tailgate with heated window and wash-wipe	•
LIGHTING & VISIBILITY	
Halogen headlights with integrated daytime running lights (DRLs)	•
Remote headlamp adjustment from fascia	•
Reversing light	•
Rear fog light	•
High level third brake light	•
Heated and electrically adjustable door mirrors	•
TOWING	
Preparation for towbar: wiring and connector for towbar interface	•
INTERIOR STYLE	
Grey "Silca" cloth trim	•
Driver and passenger sunvisor with ticket holder	•
Courtesy light to cabin	•
Rubber flooring in cabin	•
SEATING	
Driver's seat rake and reach adjustable	•
Front seat height-adjustable head restraints	•
Dual front passenger bench seat with under-seat storage.	•
Driver's seat with lumbar adjustment and armrest	•
3-seater bench in rows 2 and 3 with full size rear seats on rails	•
Isofix mounting points on row 2	•
STORAGE	
Glovebox (Illuminated)	•
Front door pockets	•
Open glove box on top of the dashboard	•

PEUGEOT EXPERT COMBI: CHOOSE YOUR PAINT COLOUR & UPHOLSTERY

		COMBI
Upholstery		Grey 'Silca' Cloth
Trim Code		42FR
Solid Paint		
Bianca White	WPP0	●
Metallic Paint		
Rich Oak	G6M0	○
Nimbus Grey	VLM0	○
Amber Red	V7M0	○
Pearl Sand	EUM0	○
Special Paint		
Nera Black Pearl	9VM0	○
Cumulus Grey	F4M0	○

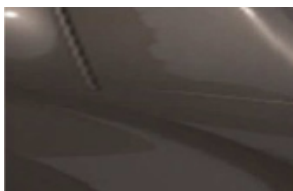
● Standard ○ Cost Option

SOLID PAINT



Bianca White

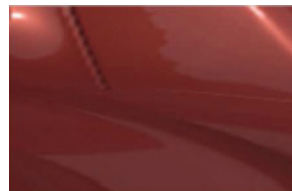
METALLIC COLOURS



Rich Oak



Nimbus Grey

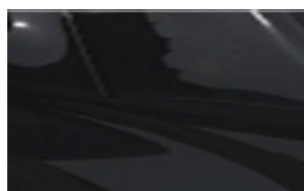


Amber Red



Pearl Sand

SPECIAL COLOURS



Nera Pearl Black



Cumulus Grey

WHEELS



16" steel wheel with black centre cap



17" steel wheel with black centre cap

PEUGEOT EXPERT COMBI: KNOW YOUR VEHICLE IN DETAIL

6.3 Technical Specifications: Engines, Performance & Weights

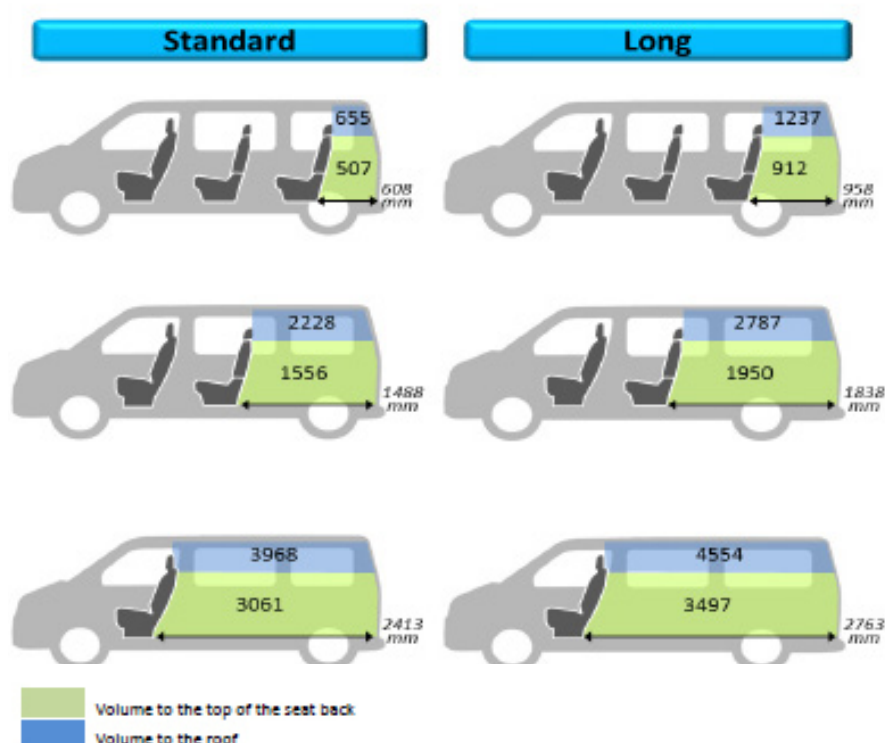
VERSIONS	1.5 BlueHDI 120bhp S&S		
Length	Compact	Standard	Long
ENGINE			
Capacity (cc)	1499		
Cylinders / Valves	4/8		
Max power (bhp/kW&rpm)	120/88@3500		
Max torque (Nm/rpm)	221/300@1750		
Bore and stroke (mm)	75 x 84.8		
Fuel system	Diesel - High Pressure Turbo Charged Injection		
Euro status	EURO 6.3		
Stop & Start system	●		
TRANSMISSION			
Gearbox	Manual		
Number of gears	6		
PERFORMANCE (All figures driver alone)			
Max speed (kph)	160		
0-100kph (secs)	14.3		
ECONOMY Litres/100km			
Regulated emissions standard	EURO 6.3		
WLTP Combined drive cycle litres / 100km	6.4 - 6.5		
WLTP Carbon Dioxide (CO2) emissions (g/km)	168 - 170		
WEIGHTS (kg) with 9 seats			
Payload (1)	1037	1095	1125
Kerb weight (2)	1648	1660	1660
Gross Vehicle Weight (GVW)	2685	2755	2785
Max plated front axle (3)	1500	1500	1500
Max plated rear axle (3)	1500	1500	1500
Gross Train Weight (GTW)	4085	4155	4190
Maximum braked towing weight (4)	1800	1800	1800
Maximum unbraked towing weight	750	750	750
Maximum towball weight	72	72	72
BRAKES Front/Rear			
Turning Circle between kerbs			
SUSPENSION			
Fuel tank capacity Litres			

(1) Difference between GVW and kerb weight. (2) Without driver: kerb weight is calculated including oil, water, lubricants, tools, spare wheel and 90% full fuel tank. Weights may change with the addition of equipment. (3) Within limits of GVW. (4) Maximum recommended towing weight within limits of GTW.

Dimensions & Volumes

VERSIONS		
	STANDARD	LONG
EXTERIOR DIMENSIONS (mm)		
Length	4959	5309
Front overhang	881	
Wheelbase	3275	
Rear overhang	803	1153
Width (excluding door mirrors)	1920	
Width (door mirrors unfolded)	2204	
Front track at wheel centre	1627	
Rear track at wheel centre	1600	
Height (1)	1895	
DIMENSIONS OF REAR DOORS (mm)*		
Maximum width of rear doors	1212	
Maximum height of rear doors	1181	
Minimum load sill height (1)	544	600
Maximum load sill height (1)	613	633
DIMENSIONS OF SIDE DOORS (mm)		
Maximum width of side doors	933	
Maximum height of side doors	1181	
INTERIOR DIMENSIONS (mm)		
Maximum load height	1337	1339
Maximum load length (behind front seats)	2413	2763
Load width between wheel arches	1228	
Maximum waist width 1st row / 2nd row / 3rd row	1515 / 1586 / 1570	
TURNING CIRCLE (m)		
Turning circle between kerbs	12.4	

(1) Vehicle in running order



PEUGEOT EXPERT COMBI: KNOW YOUR VEHICLE IN DETAIL



(1) Compact
(2) Standard
(3) Long



€60E JANUARY 2022. FOR FURTHER INFORMATION TALK TO YOUR LOCAL PEUGEOT DEALER OR SEE WWW.PEUGEOT.IE.

The information contained in this specification sheet, is based on the data and images available at the time of publication. Some photography may feature left hand drive models. All images shown are for illustration purposes only. Photographic processes used may alter the depth and tone of the colours shown. As part of a policy on continuous specification improvement, Peugeot reserves the right to modify colours, trims, engine range, options and standard equipment at any time. This specification sheet is not a contractual document or offer of sale. The specified fuel consumption and emission values are the official figures obtained from tests under standardised EU test conditions in accordance with the Worldwide Harmonized Light Vehicles Test Procedure (WLTP), a more realistic test method for measuring fuel consumption (l/100km) and CO2 emissions and are correct at the time of print. WLTP replaces the previous NEDC test method. The included values reflect the standard vehicle excluding additional equipment such as optional extras and accessories which may have an effect on the fuel consumption (l/100km) and CO2 emissions produced. You can discover more about the WLTP at peugeot.ie/brand-and-technology/wltp